

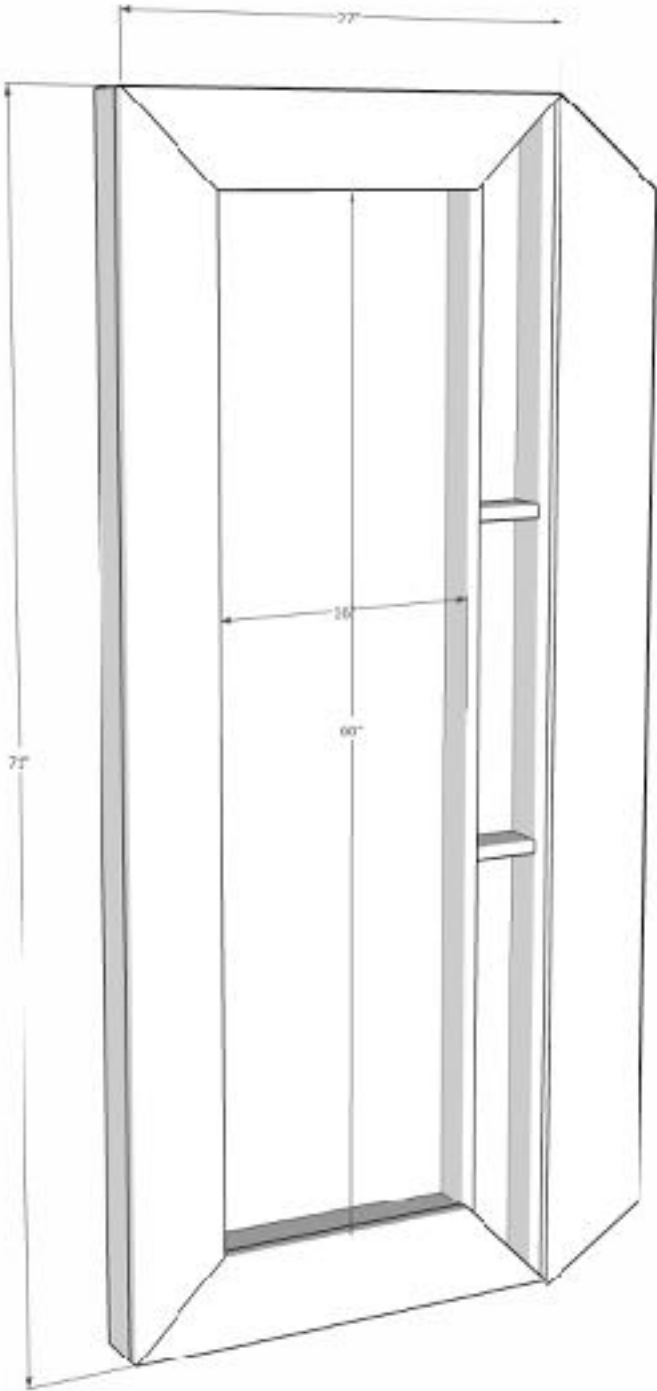
---

# DIY Full-Length Mirror with Hidden Storage

---



# Dimensions



# Before you begin...

Before beginning this project, please read through all of the plans as well as the blog post associated with this project . Always use safety precautions whenever using power tools and follow the manufacturer's suggested guidelines. Make sure to wear proper safety protection (eye protection, hearing protection, etc.) before beginning any project. Cut all pieces per the measurements in the plans, unless noted otherwise.

## Tools and Supplies Needed

Table Saw

Miter Saw

Drill

Kreg Jig

Orbital Sander

220 grit sandpaper

1" and 1 1/4" pocket screws

Wood glue

Brad nailer

1" and 1 1/4" brad nails

4 - 2" hinges

clamps

Paint sprayer or paint brush

Finish of choice (I used latex paint in Swiss Coffee)

# Materials and Cut List

## Materials

1 sheet 1/2" veneer plywood

3 - 1x4 select pine boards at 8' long (ripped down to 3" wide)

2 - 1x3 select pine boards at 8' long

3 - 1x6 select pine boards at 8' long

2 - 3/4" x 1/2" pine trim @ 8' long

60" x 16" frameless mirror

## Cut List:

1/2" plywood cut at 25 1/2" x 69 1/2"

2 - 1x4 (ripped to 3" wide) @ 71" long

2 - 1x4 (ripped to 3" wide) @ 25 1/2" long

2 - 1x3 @ 69 1/2" long

2 - 1x3 @ 16" long

4 - 1x3 @ 4" long

2 - 1x6 cut at 45 degrees @ 71" long, measuring longest points

2 - 1x6 cut @ 45 degrees @ 27" long, measuring longest points

2 - 3/4" x 1/2" pine trim @ 60" long

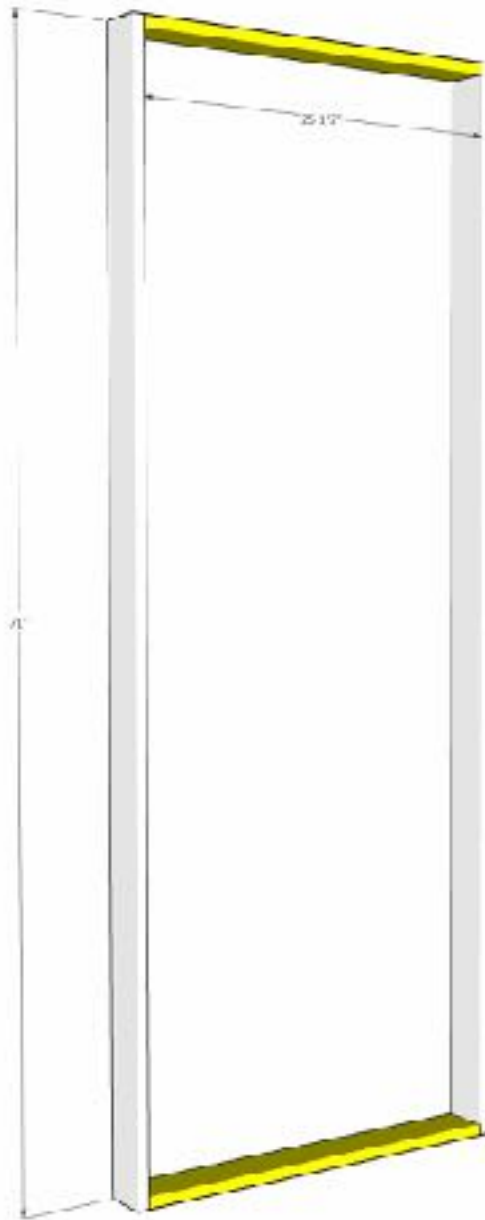
2 - 3/4" x 1/2" pine trim @ 15" long

*Sand all pieces before assembly.*

# Step One

## *Building the Outer Frame*

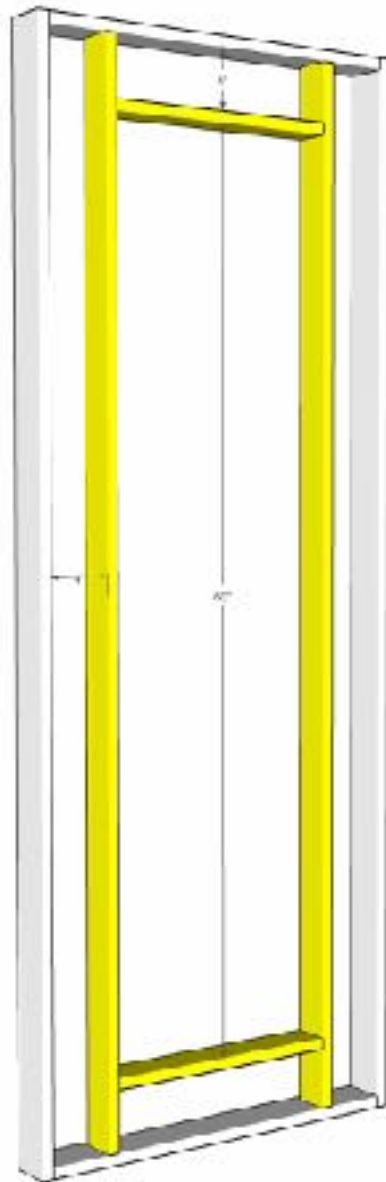
Drill 3/4" pocket holes into the 25 1/2" long pieces. Clamp and attach to the longer boards using wood glue and 1 1/4" pocket screws.



# Step Two

## *Build the Inner Frame*

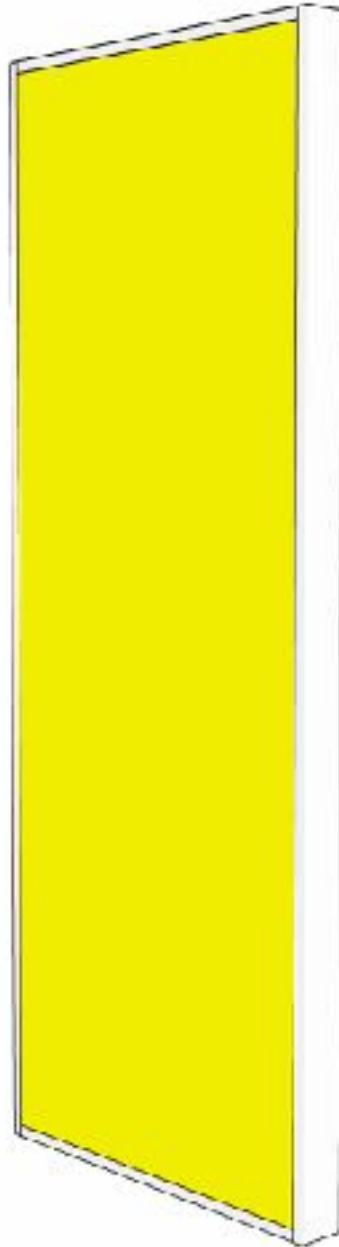
Drill  $\frac{3}{4}$ " pocket holes into each end of the  $69 \frac{1}{2}$ " and 16" boards. These boards will be flush with the front face of the outer frame. Place the longer boards 4" from the inside edge of the outer frame with the pocket holes facing the inside of the frame. Clamp and attach with wood glue and  $1 \frac{1}{4}$ " pocket screws. For the shorter pieces, place 4" in from the upper and lower portion of the frame with the pocket holes facing away from the middle opening. This hides all of the pocket holes and prevents them from needing to be filled. Attach in place with wood glue and  $1 \frac{1}{4}$ " pocket screws.



# Step Three

## *Attach the Back*

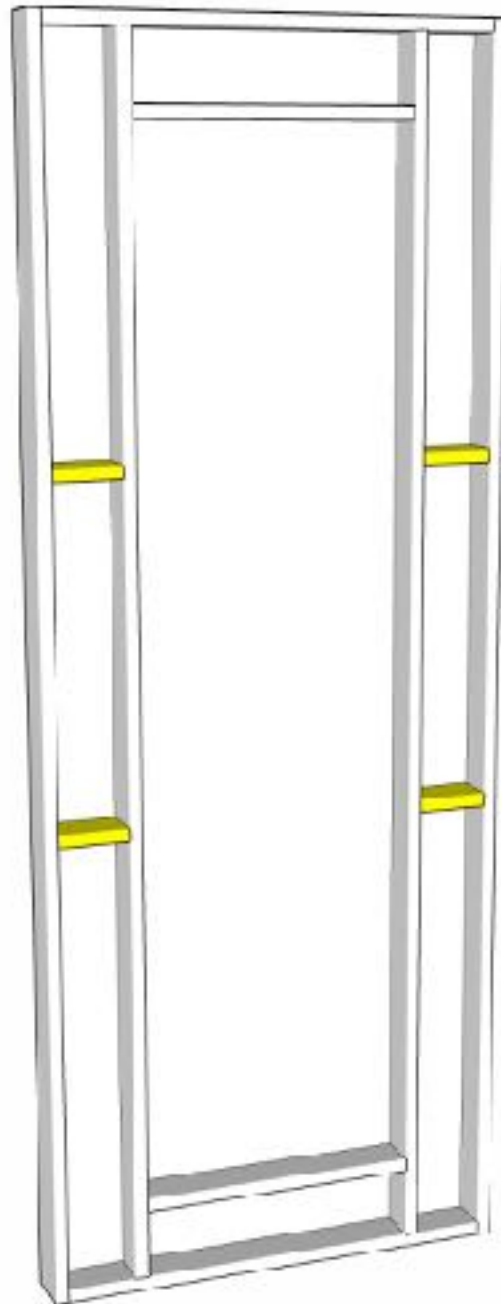
Drill 1/2" pocket holes into each side of the 1/2" plywood. Lay the frame face down on a flat surface. Apply wood glue to the inner frame pieces. Fit the plywood into the outer frame and clamp into place. Attach with 1" pocket screws.



# Step Four

## *Add Small Shelves*

Place the small shelves for bracelets and watches where desired. The top shelves were set 23" from the inside edge of the frame and the bottom shelves were set 25" from the inside edge of the frame. Glue and nail into place with 1 1/4" brad nails.

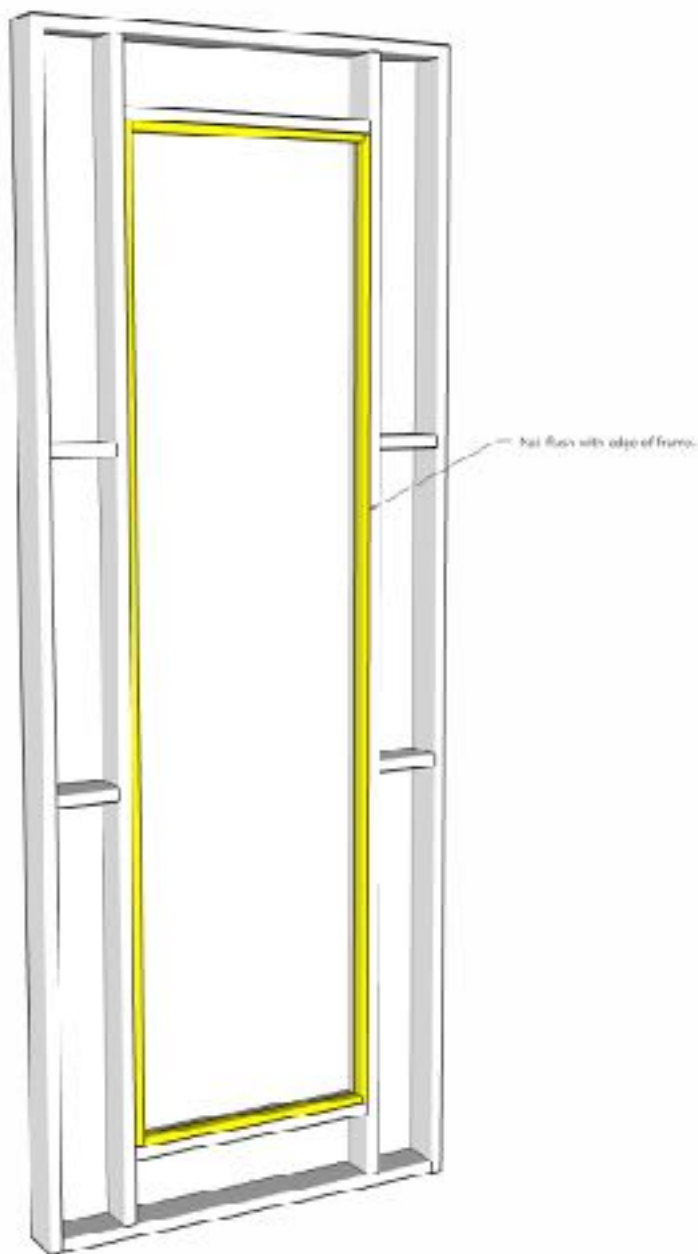




# Step Five

## *Add Cleats for Mirror*

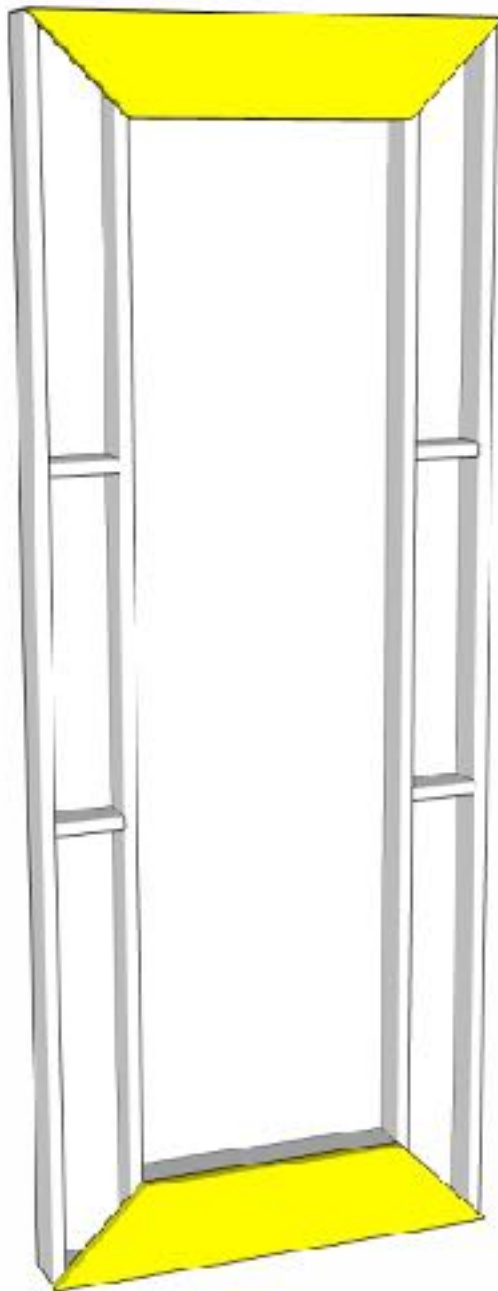
Place the 60" pine trim pieces flush with the front edge of the mirror frame. Glue and nail into place with 1" brad nails. Repeat the same steps with the 15" pieces for the upper and bottom portion of the frame.



# Step Six

## *Attach the Upper and Lower Face Frame*

Using wood glue and 1 1/4" brad nails, attach the upper and lower face frame pieces to the mirror frame. Fill nail holes with wood filler and sand.



# Step Seven

## *Attach the Hinges and the Doors*

Measure and attach the hinges 15" down from the upper corners and 15" up from the bottom corners of the frame. Measure and mark 15" from the upper and lower end of each of the doors. Stack scrap wood next to the mirror frame and place the doors on it to make them level with the frame for ease of attaching the hinges. Attach the hinges to the doors. Open and close them to ensure a proper fit, sand the mitered edges as needed to ensure the doors open and close properly. Remove the hinges and finish as desired. Reattach the hinges once finish work is done.

